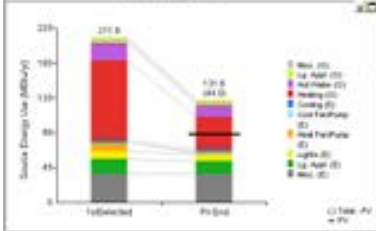
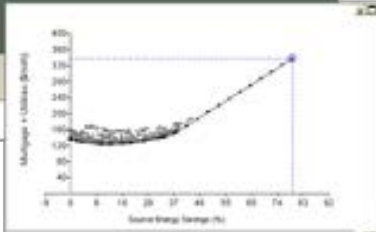
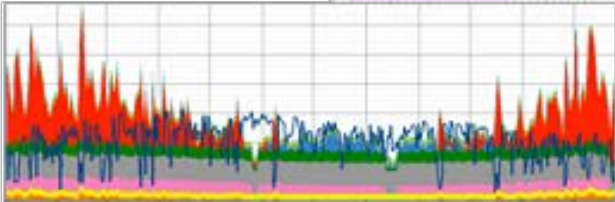
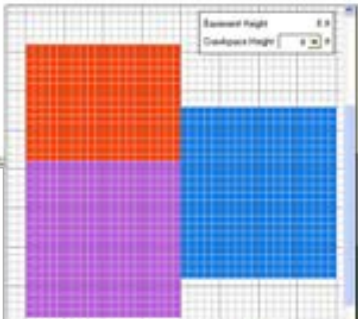
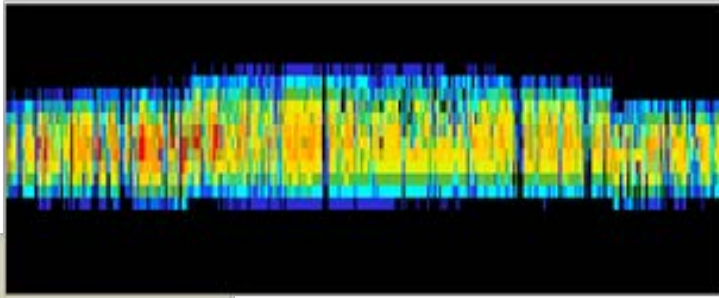
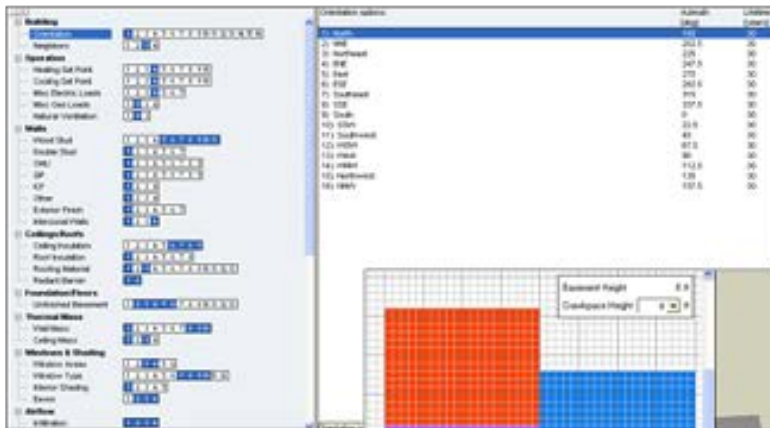


# New Multifamily Capabilities in BEopt



**Eric Wilson, Craig Christensen, Scott Horowitz**  
**National Renewable Energy Laboratory**

**EEBA Excellence in Building Conference & Expo**  
**October 7, 2015**



Download at [beopt.nrel.gov](http://beopt.nrel.gov)

# Acknowledgements

Funded by:

- **California Solar Initiative (CSI) RD&D Program** (California Public Utilities Commission)
- **U.S. Department of Energy** Building Technologies Office
- **Bonneville Power Administration**

Project roles:

- **NREL:** Lead modeling / software development
- **Davis Energy Group:** Project management, model development support, testing



# Release Schedule

---

July 1, 2015

*Beta Release (2.4)*

October 2015

*Final Release (2.5)*

# Multifamily Use Cases

1. Analyzing **whole-building**  
(e.g., owner or builder of apartment building)



Source: TRC Solutions. California Multi-Family New Homes Case Studies

2. Analyzing **single unit**  
(e.g., owner of single condo or townhouse)



Source: NREL Image Gallery #15966. Photo by Open Energy Corporation

# Multifamily Use Cases

---

## Supported building types

- Duplexes/quadplexes
- Rowhouses
- Two-flats, three-flats, etc.
- Apartment buildings & condominiums  
(single- and double-loaded corridor)

**Begin demonstration**

# Questions and comments?

Send additional comments to: **[eric.wilson@nrel.gov](mailto:eric.wilson@nrel.gov)**